

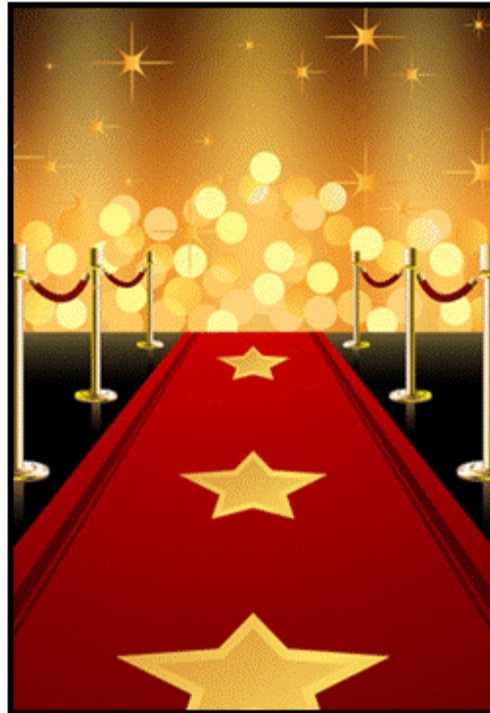
SERVING THE
COMMUNITY SINCE 1985

LEADERSHIP SAN MARCOS

The Leadership Link

WWW.LEADERSHIP SAN MARCOS.COM

AUGUST 2016



An Evening With the Stars

Leadership San Marcos

Annual Kick Off Celebration

Sunday, August 28th

5:30 to 8:00PM

Just South of the Square

123 South LBJ Dr.

Walk the Red Carpet and glam it up in the Spotlight! Bring out your Hollywood best and mingle amongst the stars and support the new Class of 2018.

Mark your calendars, it's that time again!

Come out to, Just south of the Square and walk among the stars while you meet the new Class of 2018!

You wont want to miss this Star Studded night!

August 28th from 5:30 to 8:00PM

Just South of the Square

123 South LBJ Dr.

Featured Alumni

Johanna Haley



Shortly after moving here with her husband O.C. in 2002, Johanna was told about Leadership San Marcos. They were both actively involved as alumni of Texas State serving on the Alumni Association Board of Directors.

Johanna was scheduled to be the 2008 Alumni Association President and wanted to learn more about the community in order to promote collaborative efforts between the two entities. Her favorite memories of 2006 events included canoeing with Daniel Guerrero without turning over, the camaraderie of the teams that were formed for their 20th Year Project, speaking about the project at different civic organizations, and seeing the Digitized Sign project come to fruition in front of the San Marcos Activity Center.

In the fall of 2008, Johanna decided to resume her career as a teacher. After missing a few years as a LSM alumna while teaching speech communication and coaching debate tournament events for SMHS, she is looking forward to participation with LSM in the future.

Sadly, her husband passed away in April 2015. She says that attending GriefShare helped her to ‘find her way’ through the mourning process. She recommends GriefShare to anyone who has lost a loved one, whether recently or years ago.

“Moving Forward” is a term used in GriefShare and Johanna has taken that as a motto. As a retiree, she is combining her passion for acting and her faith in the Lord for a new endeavor, performing dramatizations of women from the Bible. A website will be up by the first of September: www.HeavensHopes.com. For now, she can be contacted at johanna-haley@gmail.com.

Attention Alumni!!

If you would like to sponsor a break or lunch for our current class sessions please let us know.

You can contact Bryn Major @ bryn@thedamrongroup.com or Laura Murray @ laura.murray07@gmail.com

This Years Calendar

2016

JANUARY						
SUNDAY	MONDAY	TUESDAY	WEDNESDAY	THURSDAY	FRIDAY	SATURDAY
				1	2	
3	4	5	6	7	8	9
10	11	12	13	14	15	16
17	18	19	20	21	22	23
24	25	26	27	28	29	30
31						

FEBRUARY						
SUNDAY	MONDAY	TUESDAY	WEDNESDAY	THURSDAY	FRIDAY	SATURDAY
	1	2	3	4	5	6
7	8	9	10	11	12	13
14	15	16	17	18	19	20
21	22	23	24	25	26	27
28	29					

MARCH						
SUNDAY	MONDAY	TUESDAY	WEDNESDAY	THURSDAY	FRIDAY	SATURDAY
	1	2	3	4	5	
6	7	8	9	10	11	12
13	14	15	16	17	18	19
20	21	22	23	24	25	26
27	28	29	30	31		

APRIL						
SUNDAY	MONDAY	TUESDAY	WEDNESDAY	THURSDAY	FRIDAY	SATURDAY
					1	2
3	4	5	6	7	8	9
10	11	12	13	14	15	16
17	18	19	20	21	22	23
24	25	26	27	28	29	30

MAY						
SUNDAY	MONDAY	TUESDAY	WEDNESDAY	THURSDAY	FRIDAY	SATURDAY
1	2	3	4	5	6	7
8	9	10	11	12	13	14
15	16	17	18	19	20	21
22	23	24	25	26	27	28
29	30	31				

JUNE						
SUNDAY	MONDAY	TUESDAY	WEDNESDAY	THURSDAY	FRIDAY	SATURDAY
		1	2	3	4	
5	6	7	8	9	10	11
12	13	14	15	16	17	18
19	20	21	22	23	24	25
26	27	28	29	30		

JULY						
SUNDAY	MONDAY	TUESDAY	WEDNESDAY	THURSDAY	FRIDAY	SATURDAY
					1	2
3	4	5	6	7	8	9
10	11	12	13	14	15	16
17	18	19	20	21	22	23
24	25	26	27	28	29	30
31						

AUGUST						
SUNDAY	MONDAY	TUESDAY	WEDNESDAY	THURSDAY	FRIDAY	SATURDAY
		1	2	3	4	5
6	7	8	9	10	11	12
13	14	15	16	17	18	19
20	21	22	23	24	25	26
27	28	29	30	31		

SEPTEMBER						
SUNDAY	MONDAY	TUESDAY	WEDNESDAY	THURSDAY	FRIDAY	SATURDAY
		1	2	3		
4	5	6	7	8	9	10
11	12	13	14	15	16	17
18	19	20	21	22	23	24
25	26	27	28	29	30	

OCTOBER						
SUNDAY	MONDAY	TUESDAY	WEDNESDAY	THURSDAY	FRIDAY	SATURDAY
					1	
2	3	4	5	6	7	8
9	10	11	12	13	14	15
16	17	18	19	20	21	22
23	24	25	26	27	28	29
30	31					

NOVEMBER						
SUNDAY	MONDAY	TUESDAY	WEDNESDAY	THURSDAY	FRIDAY	SATURDAY
		1	2	3	4	5
6	7	8	9	10	11	12
13	14	15	16	17	18	19
20	21	22	23	24	25	26
27	28	29	30			

DECEMBER						
SUNDAY	MONDAY	TUESDAY	WEDNESDAY	THURSDAY	FRIDAY	SATURDAY
					1	2
3	4	5	6	7	8	9
10	11	12	13	14	15	16
17	18	19	20	21	22	23
24	25	26	27	28	29	30
31						

Please note that these date are subject to change. Please keep watch for any updates in the Monthly Newsletter!

July 19th- First Annual Family Pool Party- Country Estates Pool 6:30-8:30

August 28th- Kick Off @ 5:30-8pm. Location: Just south of the Square.

September 22nd- Lunch N Learn 11:30-1 located at CTMC Hospice sponsored by CTMC Hospice

October 19th- HEB distribution tour 5:30-8 Sponsored by HEB limited to 20 people. If we have more than 30 sign up another tour will be offered on October 5th. Sponsored by HEB

November 16th- 5:30-7:30 Happy Hour mixer Location to be determined

December 12th- 6-8 Christmas Party Location to be determined

January- Lunch N Learn

February- Cottage Kitchen

March- Young Professionals mixer

April- Annual Meeting and graduation



* 100% Polyester Pique, Moisture Wicking antimicrobial. Men's and Women's sizes available.

Interested in getting a new Leadership shirt!?

Maybe you...
Lost your shirt?...
Too small or big?...
Faded?...
Just want a new one?...

We will be placing the first order by the beginning of August so you can pick up your new shirt at the Kick off in August!!
The shirt will cost \$30.00

Send us your shirt size and how many you want to...
[alumni@leadershipsanmarcos.org!](mailto:alumni@leadershipsanmarcos.org)

Community Involvement:

February:

Don't forget to visit....

www.san-marcos.tx.us

www.sanmarcostexas.com

www.toursanmarcos.com

For more exciting events
coming up in our
Community!!



Be the kind
of leader
that you
would
follow.

GeniusQuotes.net



2016-2017
Alumni
Association
Members

We are collecting Membership dues!!!



Make sure you get yours in!!!

Mission Statement:

The mission of **Leadership San Marcos** is to identify, inform, educate, and motivate individuals to participate in programs and activities that will improve the San Marcos community. We accomplish this by:

- Providing a continuing education program for our members in order to foster an awareness of current issues facing the community, and to inspire personal growth and ongoing training in leadership skills;
- Providing a means of networking to exchange ideas and introduce opportunities for community involvement for our members; and
- Establishing and maintaining our identity as a willing and capable pool of leadership talent, interested and ready to serve the community.

*Discover
the leader
in you!*

Alumni News:

Wondering what your fellow

Class mates & Alumni members have been up to?

Nominate someone the Leadership Link can reach out to and feature an update on in the next newsletter.

Email: alumni@leadershipsanmarcos.org with your nominee

Don't forget to pay your dues so you can be featured!!

Alumni Membership Information

Leadership San Marcos provides face-to-face contact with peers from various organizations and industries in the community. Networking advantages through Leadership San Marcos include expanding your resources, keeping abreast of new developments, learning about other businesses and industries and making new business contacts.

If you are not already an alumni member, please plan to send your dues in today! Membership only costs \$50 per year and we will gladly provide a receipt. Not only will your dues go towards promoting and enhancing the Leadership San Marcos program, your membership is a great way to stay involved in community events and be a part of great networking opportunities!

NOTE: LSM has implemented a PayPal account for renewals and donations! On the LSM homepage at www.leadershipsanmarcos.com, you will find a large yellow "Donate" button for convenient online payment of dues, project donations, or any contributions (as seen below). The PayPal interface provides a comment field so you can specify the purpose for your payment. If you choose this method of payment, please include a 2.8% processing fee. A \$50 membership would cost \$51.40. ($50 \times 1.028 = 51.40$)

In addition, you can also contact any of the 2016-2017 LSM Board of Directors to pay your dues or send them to P.O. Box 1144, San Marcos, TX 78667-1144. If you mail in your dues, please include the invoice or indicate in the memo line of the check that you are submitting your "alumni dues."

Feedback Welcome:

The Board of Directors welcomes your ideas and feedback so that we can continue to provide an invaluable experience for all members of Leadership San Marcos. We take your input very seriously and will strive to meet your needs as we develop class programs, enrichment lunches, and other activities that will not only capture your interest as alumni or class members, but also continue to spark the interest of future leaders in joining our distinguished group.

You may contact our Board President, Jeff Caldwell, via email at alumni@leadershipsanmarcos.org, or any member of the Board of Directors, to offer your ideas, comments, or concerns. You are also always welcomed to send your thoughts and comments to the Board at P.O. Box 1144, San Marcos, TX 78667-1144.